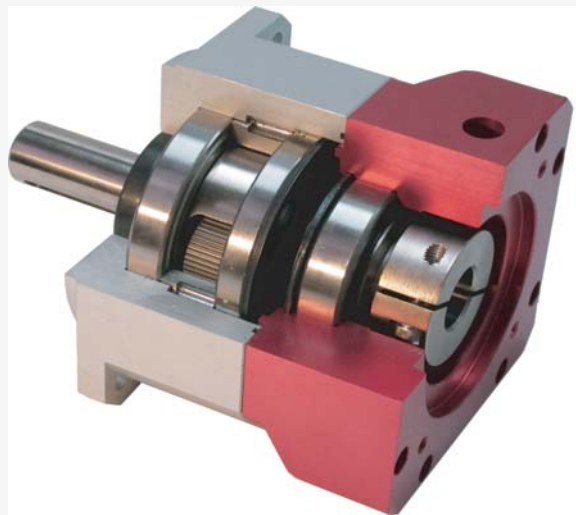




紅菱重工
HONLIN HEAVY INDUSTRIES

行星式減速機

Planetary Gear Reducer



高鋼性
低背隙
高轉距

紅菱重工股份有限公司

HONLIN HEAVY INDUSTRIES CO.,LTD

<http://www.honlin-hp.com>

Specifications

Gearbox Performance



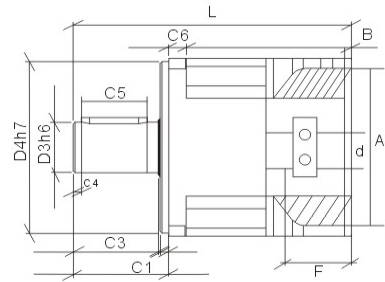
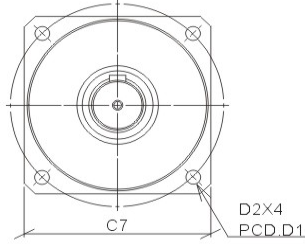
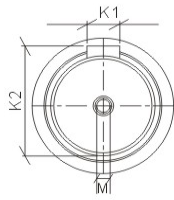
Item	Unit	Stage	AS060	AS070	AS090	AS120	AS150	AS180	AH060	AH090	AH120	AH150	AL060	AL90	AL120	AL150	AHL90	
Rated output torque Tn	Nm	1,2	48	60	176	285	520	1185	48	168	285	520	45	168	285	520	168	
Allowable max. output torque Tp	Nm	1,2	Tn x 3	Tn x 3	Tn x 3	Tn x 3	Tn x 3	Tn x 3	Tn x 2	Tn x 3	Tn x 3	Tn x 3	Tn x 2	Tn x 3	Tn x 3	Tn x 3	Tn x 3	
		1	≤ 6	≤ 6	≤ 6	≤ 5	≤ 5	≤ 5	≤ 10	≤ 10	≤ 11	≤ 12	≤ 10	≤ 10	≤ 11	≤ 11	≤ 12	≤ 10
Backlash	Arcmin	1	≤ 6	≤ 6	≤ 6	≤ 6	≤ 7	≤ 7	≤ 12	≤ 12	≤ 13	≤ 14	≤ 12	≤ 12	≤ 13	≤ 13	≤ 14	≤ 12
		2	≤ 8	≤ 8	≤ 8	≤ 8	≤ 7	≤ 7	≤ 12	≤ 12	≤ 13	≤ 14	≤ 12	≤ 12	≤ 13	≤ 13	≤ 14	≤ 12
Torsional Rigidity	Nm/Arcmin	1,2	6.5	6.5	13.7	27	48	115	7	11	27	48	7	7	11	11	7	
Allowable Radial force FLR	N	1,2	1400	1400	6200	7500	14000	22000	840	6000	7500	14000	840	840	6000	6000	840	
Allowable Axial force FLA	N	1,2	800	800	5200	3225	12000	20000	605	5000	3225	12000	605	605	5000	5000	605	
Efficiency	%	1,2	95	95	95	95	95	92	95	95	95	95	95	95	95	95	95	
Weight	Kg	1	1.4	1.3	3.2	4.6	13	36	1.2	3.5	6	16	1.1	1.2	3.5	3.5	1.2	
		2	1.4	1.6	4.2	5.8	17	45.2	1.7	4.5	7.2	20	1.6	1.7	4.5	4.5	1.7	
Operation Temperature	° C	1,2	-10~+90	-10~+90	-10~+90	-10~+90	-10~+90	-10~+90	-10~+90	-10~+90	-10~+90	-10~+90	-10~+90	-10~+90	-10~+90	-10~+90	-10~+90	
Protection Level			IP65	IP65	IP65	IP65	IP65	IP65	IP65	IP65	IP65	IP65	IP65	IP65	IP65	IP65	IP65	

Reduction Ratio

Stage	L1	L2	L3
DS060	3.5.10	9.12.15.21.25.30.40.50.70.100	
	3.5.10	9.12.15.21.25.30.40.50.70.100	
DS090	3.4.5.7.10	9.12.15.16.20.21.25.28	36.45.60.75.80.90.150.200
		30.35.40.49.50.70.100	300.400.500.700.1000
		9.12.15.16.20.21.25.28	45.60.75.80.100.125
DS120	3.4.5.7.10	30.35.40.49.50.70.100	140.175.245.343
		9.12.15.16.20.21.25.28	48.64.75.80.112.125
		9.12.15.16.20.21.25.28	147.160.175.96.245.250
DS150	3.4.5.7.10	30.35.40.49.50.70.100	300.400.500.700.1000
		9.12.15.16.20.21.25.28	48.64.75.80.112.125
		9.12.15.16.20.21.25.28	147.160.175.96.245.250
DS180	3.4.5.7.10	30.35.40.49.50.70.100	300.400.500.700.1000
		9.12.15.16.20.21.25.28	
		9.12.15.16.20.21.25.28	
DH060	3.4.5.7.10	30.35.40.49.50.70.100	36.45.60.75.80.90.150.200
		9.12.15.16.20.21.25.28	300.400.500.700.1000
		9.12.15.16.20.21.25.28	36.45.60.75.80.90.150.200
DH090	3.4.5.7.10	30.35.40.49.50.70.100	300.400.500.700.1000
		9.12.15.16.20.21.25.28	36.45.60.75.80.90.150.200
		9.12.15.16.20.21.25.28	300.400.500.700.1000
DH120	3.4.5.7.10	30.35.40.49.50.70.100	36.45.60.75.80.90.150.200
		9.12.15.16.20.21.25.28	300.400.500.700.1000
		9.12.15.16.20.21.25.28	36.45.60.75.80.90.150.200
DH150	3.4.5.7.10	30.35.40.49.50.70.100	300.400.500.700.1000
		9.12.15.16.20.21.25.28	36.45.60.75.80.90.150.200
		9.12.15.16.20.21.25.28	300.400.500.700.1000
DL060	3.4.5.7.10	30.35.40.49.50.70.100	36.45.60.75.80.90.150.200
		9.12.15.16.20.21.25.28	300.400.500.700.1000
		9.12.15.16.20.21.25.28	36.45.60.75.80.90.150.200
DL090	3.4.5.7.10	30.35.40.49.50.70.100	36.45.60.75.80.90.150.200
		9.12.15.16.20.21.25.28	300.400.500.700.1000
		9.12.15.16.20.21.25.28	36.45.60.75.80.90.150.200
DL120	3.4.5.7.10	30.35.40.49.50.70.100	300.400.500.700.1000
		9.12.15.16.20.21.25.28	36.45.60.75.80.90.150.200
		9.12.15.16.20.21.25.28	300.400.500.700.1000
DL150	3.4.5.7.10	30.35.40.49.50.70.100	36.45.60.75.80.90.150.200
		9.12.15.16.20.21.25.28	300.400.500.700.1000
		9.12.15.16.20.21.25.28	36.45.60.75.80.90.150.200
DHL090	3.4.5.7.10	30.35.40.49.50.70.100	300.400.500.700.1000
		30.35.40.49.50.70.100	300.400.500.700.1000



Dimensions

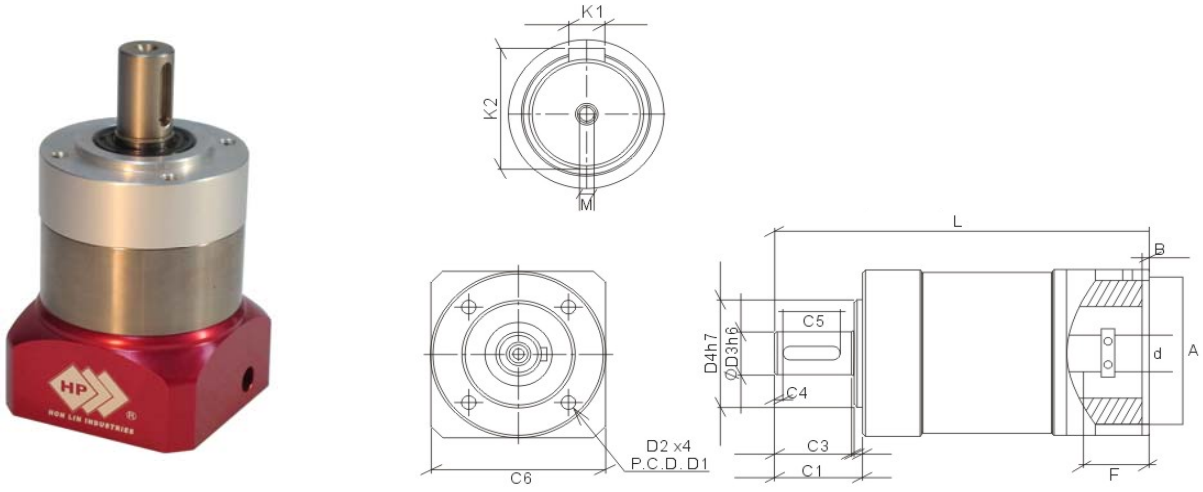


DIMEN.	AS060		AS070		AS090		AS120		AS150		AS180	
	L1	L2	L1	L2	L1	L2	L1	L2	L1	L2	L1	L2
D1	70		75		105		130		165		215	
D2	5		5.5		6.8		9		11		13	
D3	16(12~16)		16(12~16)		20(16~22)		32(24~35)		42(38~45)		55(50~60)	
D4	50		60		80		110		130		160	
C1	35		33		54.5		58		73.5		107	
C2	7		5		6		5		4		10	
C3	27		27		48.5		51		67		96	
C4	3		3		5		5		5		6	
C5	20		20		25		40		45		70	
C6	10		10		12		11		15		25	
C7	60		68		94		114		142		180	
L	125	147	125	147	168	195.5	170	198	261	313	332	414
M	M5*0.8P×12		M5*0.8P×12		M6*1.5P×12		M8*1.25P×27		M12*1.75P×32		M14*1.75P×40	
K1	5		5		6		10		12		14	
K2	18		18		22.5		35.1		45		58.5	
d	≤14		≤14		≤24		≤28		≤42		≤55	
ΔA	30~50		30~60		50~80		55~110		95~130		95~155	
B	3.5		6		8		5		10		10	
ΔF	≤30		≤30		≤40		≤56		≤85		≤95	





Dimensions

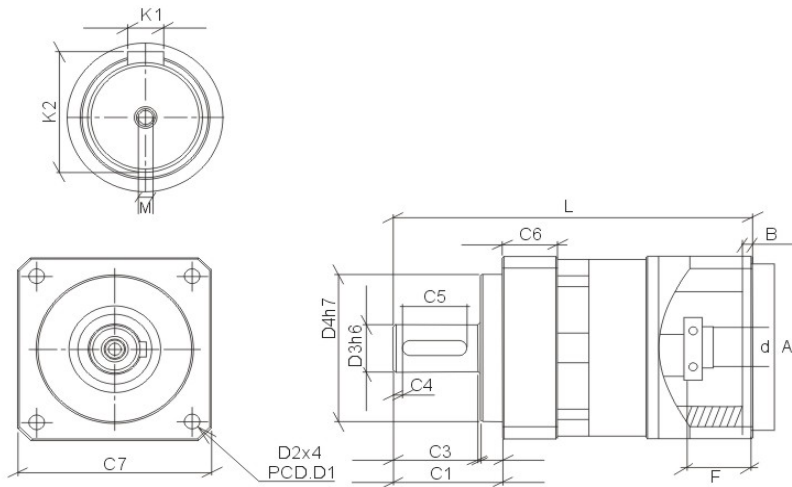


DIMEN.	AL060		AL90		AL120		AL150	
	L1	L2	L1	L2	L1	L2	L1	L2
D1	50		70		100		145	
D2	5		6		8		12	
D3	16(12~16)		20(16~22)		32(24~35)		42(38~42)	
D4	40		60		80		130	
C1	31		55		58		73.5	
C2	3		5		5		4	
C3	27		49		52		67	
C4	3		5		5		5	
C5	20		25		40		45	
C6	60		93		115		160	
L	115	133	172	198	170	198	261	313
M	M5*0.8P×12		M6*1.5P×12		M8*1.25P×27		M12*1.75P×32	
K1	5		6		10		12	
K2	18		22.5		35.1		45	
d	≤14		≤24		≤28		≤42	
ΔA	30~50		50~80		55~110		95~130	
B	3.5		8		5		10	
ΔF	≤30		≤40		≤56		≤85	





Dimensions

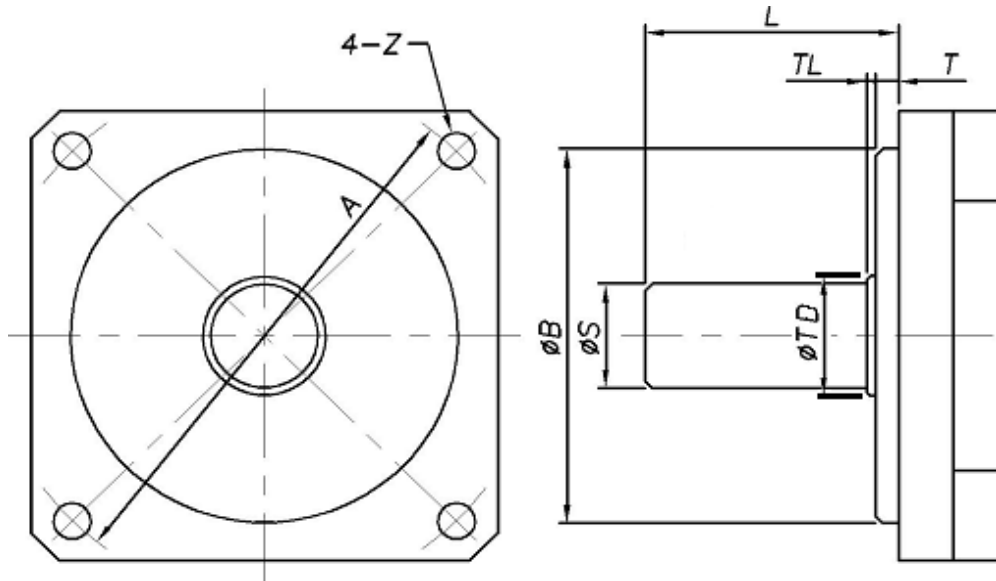


DIMEN.	AH060		AH090		AH120		AH150		AHL090	
	L1	L2	L1	L2	L1	L2	L1	L2	L1	L2
D1	70		105		130		165		105	
D2	5		6.8		9		11		6.8	
D3	16(12~16)		20(16~22)		32(24~35)		42(38~45)		20(16~22)	
D4	50		80		110		130		80	
C1	35		55		58		73.5		55	
C2	7		5		5		4		5	
C3	27		49		52		67		49	
C4	3		5		5		5		5	
C5	20		25		40		45		25	
C6	8		10		11		15		10	
C7	62		95		114		142		95	
L	115	133	172	198	170	198	261	313	172	198
M	M5*0.8P×12		M6*1.5P×12		M8*1.25P×27		M12*1.75P×32		M6*1.5P×12	
K1	5		6		10		12		6	
K2	18		22.5		35.1		45		22.5	
d	≤14		≤24		≤28		≤42		≤24	
ΔA	30~50		50~80		55~110		95~130		50~80	
B	3.5		8		5		10		8	
ΔF	≤30		≤40		≤56		≤85		≤40	





Motor Output Shaft /Gearbox Input Shaft



Note of Ordering

			Type 60	Type 70	Type 90	Type 120	Type 150	Type 180
Input Shaft	ϕS	mm	8~14	8~14	14~19	16~28	22~42	24~55
Length of Shaft	L	mm	≤ 30	≤ 30	≤ 40	≤ 56	≤ 85	≤ 95
Spigot	ϕB	mm	30~50	30~60	50~80	55~110	95~120	95~150
Length of Spigot	T	mm	≤ 3.5	≤ 6	≤ 8	≤ 5	≤ 10	≤ 10
Bolt Hole	Z	mm	Any Size					
PCD	A	mm	46~70	46~70	70~100	70~145	115~145	115~145
Number of Screw Hole			4	4	4	4	4	4

Sampel/Order Request Form

Gear Head Model	Type of Motor	Shaft Diameter	Shaft Length	Spigot Diameter	Spigot Length	PCD A	Bolt Hole Bolt Hole Z
		ϕS	L	ϕB	T		



紅菱重工股份有限公司
HONLIN HEAVY INDUSTRIES CO., LTD
 TEL:+886-2-25000019 FAX:+886-2-25040143 www.honlin-hp.com