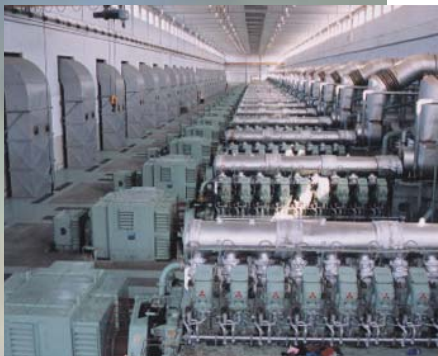
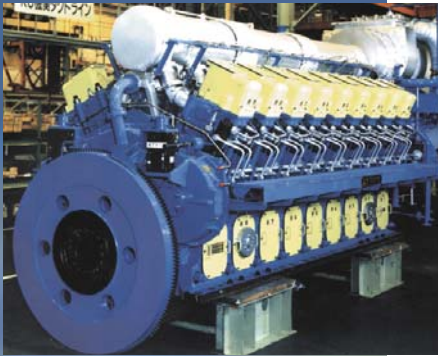


KU30A



**Still a World Class Diesel Engine after 25+ Years!
Today's KU30A is one of the World's Most Reliable & Flexible Engines**

- Runs on No.2 – No.6 Diesel Fuel Oil
- Exceptional performance and Maintenance Record when firing Heavy Fuel Oil (HFO)
- Consistent Performance for Hot Days and High Elevations:
 - No De-Rating below 600 m (1,968 ft) or 35 deg C (95 deg F)
 - Optional T/C upgrade extends performance to 1,500 m (4,900 ft)
- Multi-Engine Plant design:
 - Maintains Overall Plant Efficiency at Optimum Levels
 - Allows Independent Engine Start & Control
 - Provides savings through Non-Spinning Reserve
 - Reduces Plant Maintenance and Life Cycle Costs

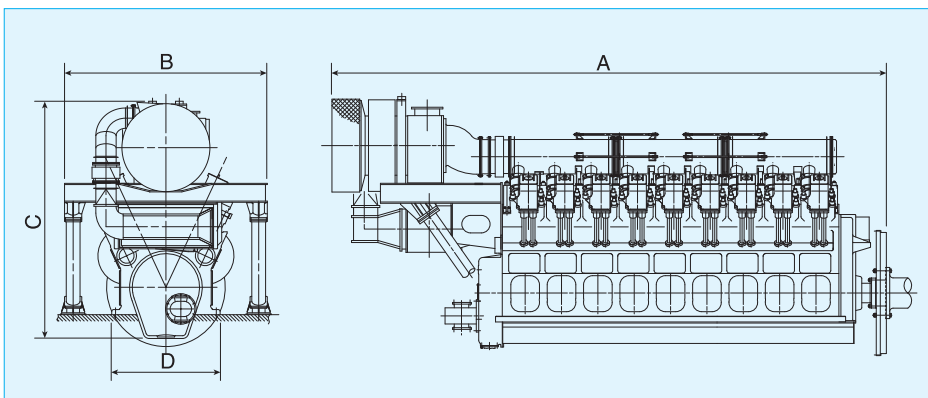
※Based upon ISO 3046 Standard Conditions & Configuration
KU30G common cylinder design facilitates Natural Gas conversion

Main Specifications

| Model: | 12KU30A | | 14KU30A | | 16KU30A | | 18KU30A | |
|---------------------------------------|----------------------------------|-------|---------|-------|---------|-------|---------|-------|
| Generator Frequency (Hz) | 60 | 50 | 60 | 50 | 60 | 50 | 60 | 50 |
| No. of Cylinders | 12 | | 14 | | 16 | | 18 | |
| Bore x stroke (mm) | 300 x 380 | | | | | | | |
| RPM | 720 | 750 | 720 | 750 | 720 | 750 | 720 | 750 |
| Generator Rated output (kWe) | 3,760 | 3,920 | 4,390 | 4,570 | 5,020 | 5,230 | 5,650 | 5,880 |
| Engine Weight (Metric Ton) | 40 | | 48 | | 54 | | 60 | |
| NOx Emissions (ppm)*1 | 710 – 780 (O ₂ : 15%) | | | | | | | |
| Steam Generation @0.69 MPaG (kg/hr)*2 | 1,470 | | 1,670 | | 1,870 | | 2,100 | |

*1: NOx value to be determined referring to local regulation.

*2: These figures are for reference only. Actual figures shall be confirmed depending on design conditions.

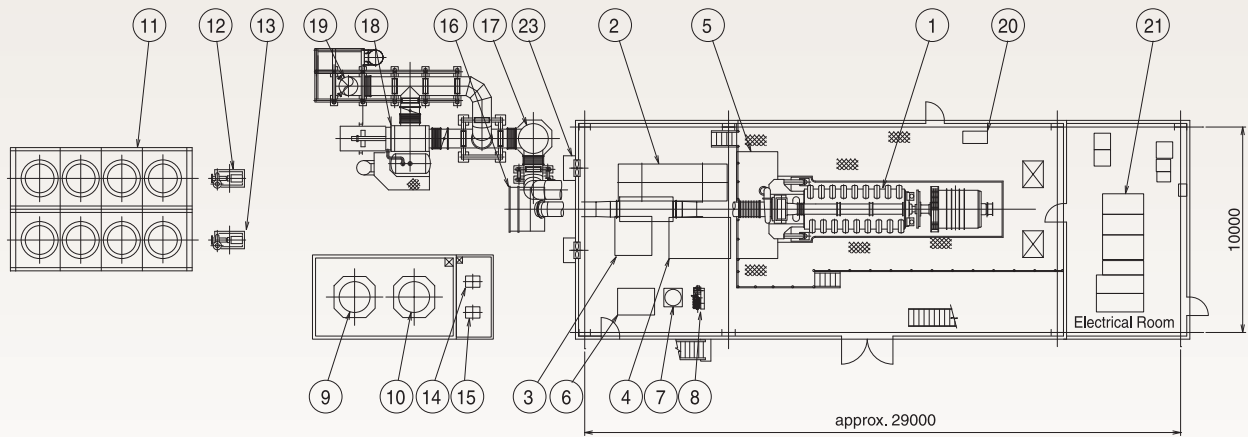
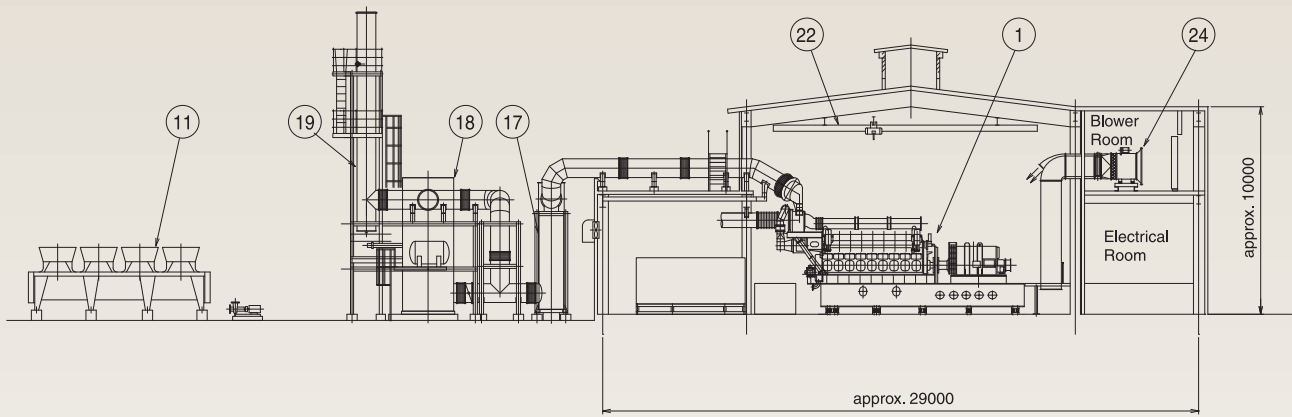


unit: mm

| Model: | A | B | C | D |
|---------|-------|-------|-------|-------|
| 12KU30A | 6,355 | 2,900 | 3,400 | 1,700 |
| 14KU30A | 7,145 | 2,900 | 3,720 | 1,700 |
| 16KU30A | 7,685 | 2,900 | 3,720 | 1,700 |
| 18KU30A | 8,225 | 2,900 | 3,720 | 1,700 |

Example of KU30A Engine Plant

Unit: mm



- | | | | |
|--------------------------------------|---------------------------|--------------------------|-----------------------|
| ① Diesel engine and generator | ⑦ Air receiver | ⑬ HT cooling water pump | ⑲ Exhaust gas stack |
| ② Lube oil and HT cooling water unit | ⑧ Air compressor | ⑭ Heavy oil supply pump | ⑳ Engine gauge board |
| ③ Lube oil purifier unit | ⑨ Diesel oil service tank | ⑮ Diesel oil supply pump | ㉑ Electrical panels |
| ④ Fuel oil and lube oil filter unit | ⑩ Heavy oil service tank | ⑯ Intake air filter | ㉒ Overhead crane |
| ⑤ Piping block | ⑪ Radiator | ⑰ Exhaust gas silencer | ㉓ Auxiliary vent fans |
| ⑥ Heavy oil purifier unit | ⑫ LT cooling water pump | ⑱ Exhaust gas boiler | ㉔ Blowers |

 **MITSUBISHI HEAVY INDUSTRIES, LTD.**

Head Office

16-5, Konan 2-chome, Minato-ku, Tokyo, Japan
Phone: 81-3-6716-4489
Telefax: 81-3-6716-5772

Yokohama Dockyard & Machinery Works

Kanazawa Plant
8-1, Sachiura 1-chome, Kanazawa-ku, Yokohama, Japan
Phone: 81-45-775-1202
Telefax: 81-45-775-1242